

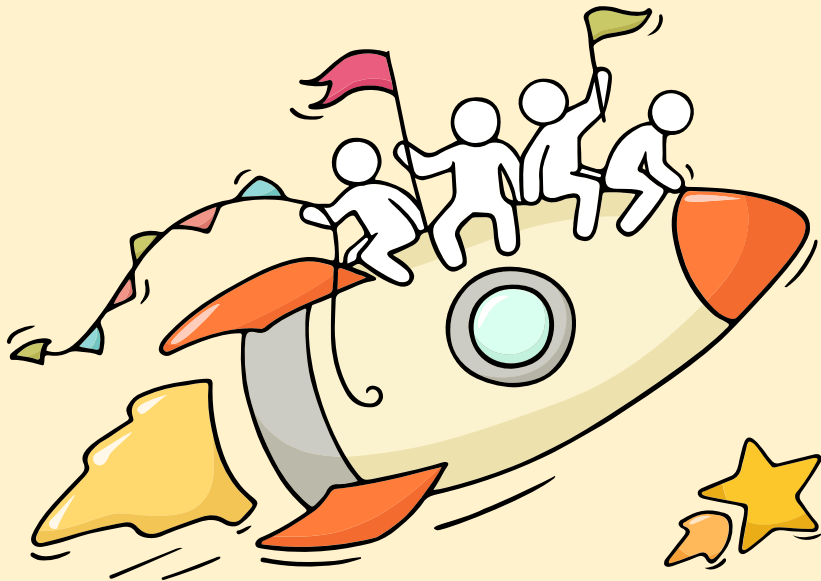
# Welcome Back!

Briefing Slides for Release of 2025 N-Level Results



# Dear students,

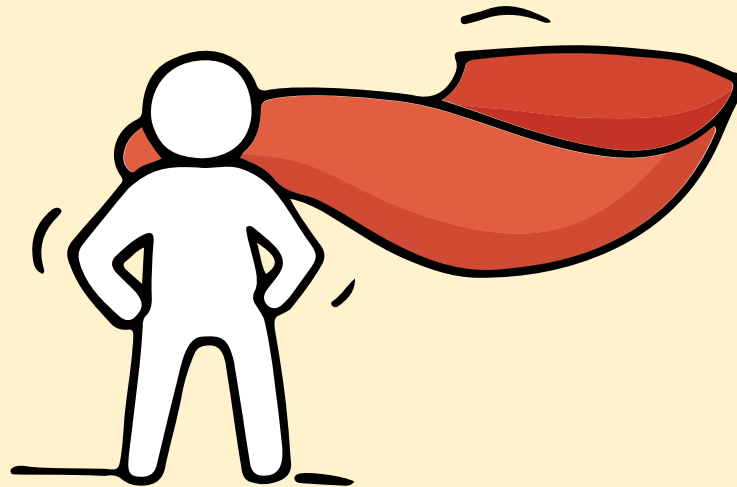
You have worked hard to reach this stage. Let's celebrate your efforts!



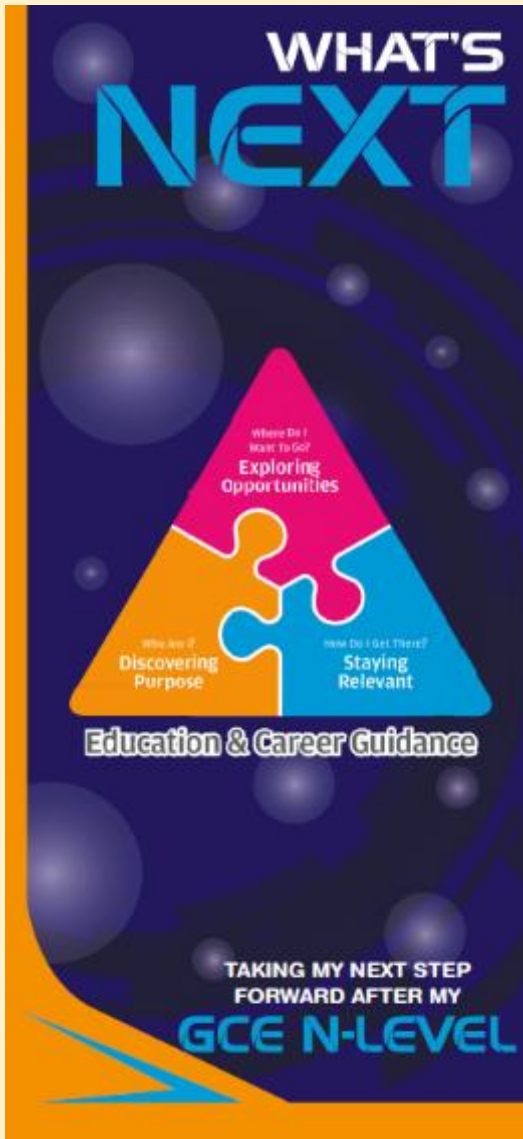
*Finally, we are going  
to get our results!*



Remember that while **everyone's**  
**educational journey is different,**  
**we can each have a fulfilling outcome!**







# Resources to help you make informed decisions



## PLANNING YOUR NEXT STEP

These resources will help you chart your path ahead:

-  • What's Next Brochure  
<https://go.gov.sg/whats-next-nlevel>
-  • Contact the ECG Centre @ MOE  
<https://go.gov.sg/moe-ecg-centre>
-  • MySkillsFuture Student Portal  
<https://go.gov.sg/MySFSec>
-  • Chat with your school's ECG Counsellor



## MySkillsFuture Student Portal

Use the information and tools to explore various education and career pathways and take charge of your future.

# Resources to help you make informed decisions



## ITE Admission & Course information Brochure for January 2026 Joint intake Exercise (JIE) For Full-Time Courses

### NOTE TO GCE 'N' LEVEL HOLDERS

Congratulations to all GCE 'N' Level holders for completing your secondary school education! You will receive a Form N, showing the list of full-time ITE courses you are eligible to apply based on your GCE 'N' Level results, through your school on the day when the 2025 GCE 'N' Level examination results are released, if you have sat for the examination as a school candidate.

Now you can begin your journey to a successful career by enrolling in ITE's post-secondary courses. With a wide range of courses to choose from, in Business & Services, Design & Media, Electronics & Info-Comm Technology, Engineering, Health Sciences and Hospitality, you can be certain of finding one that is right for you.

### Application Details

To apply and find out more information about the ITE JIE, please scan the QR Code below:



For more information, log on to [www.ite.edu.sg](http://www.ite.edu.sg).  
You can also contact us at 1800 2222 111 or [training@ite.edu.sg](mailto:training@ite.edu.sg).  
© Institute of Technical Education, Singapore (2025).

# Concerned about your next steps?

## Stop

- Calm yourself down. Take a few deep breaths.

## Think

- Think through the different options that are available for you.
- Remember that the N-Level is not the end point and is only one part of your life journey.

## Do

- Have conversations with trusted adults who know you well to advise and guide you (parents, teachers, ECG Counsellor).
- Decide and act based on your options.

**When you receive your results, you may experience a range of emotions.**

**Managing these emotions well will allow you to stay calm and make rational decisions.**



# Reaching out for support is a sign of strength

If you have questions about your options or are not coping well, you can reach out to trusted adults such as a parent/guardian, teacher, School Counsellor or ECG Counsellor. You can also talk to a trusted friend.

*Who can we  
go to for ECG  
advice?*

Make an appointment to speak with  
your ECG Counsellor in school

**OR**

Make an ECG counselling  
appointment via the  
ECG Centre @ MOE

<https://go.gov.sg/moe-ecg-centre>

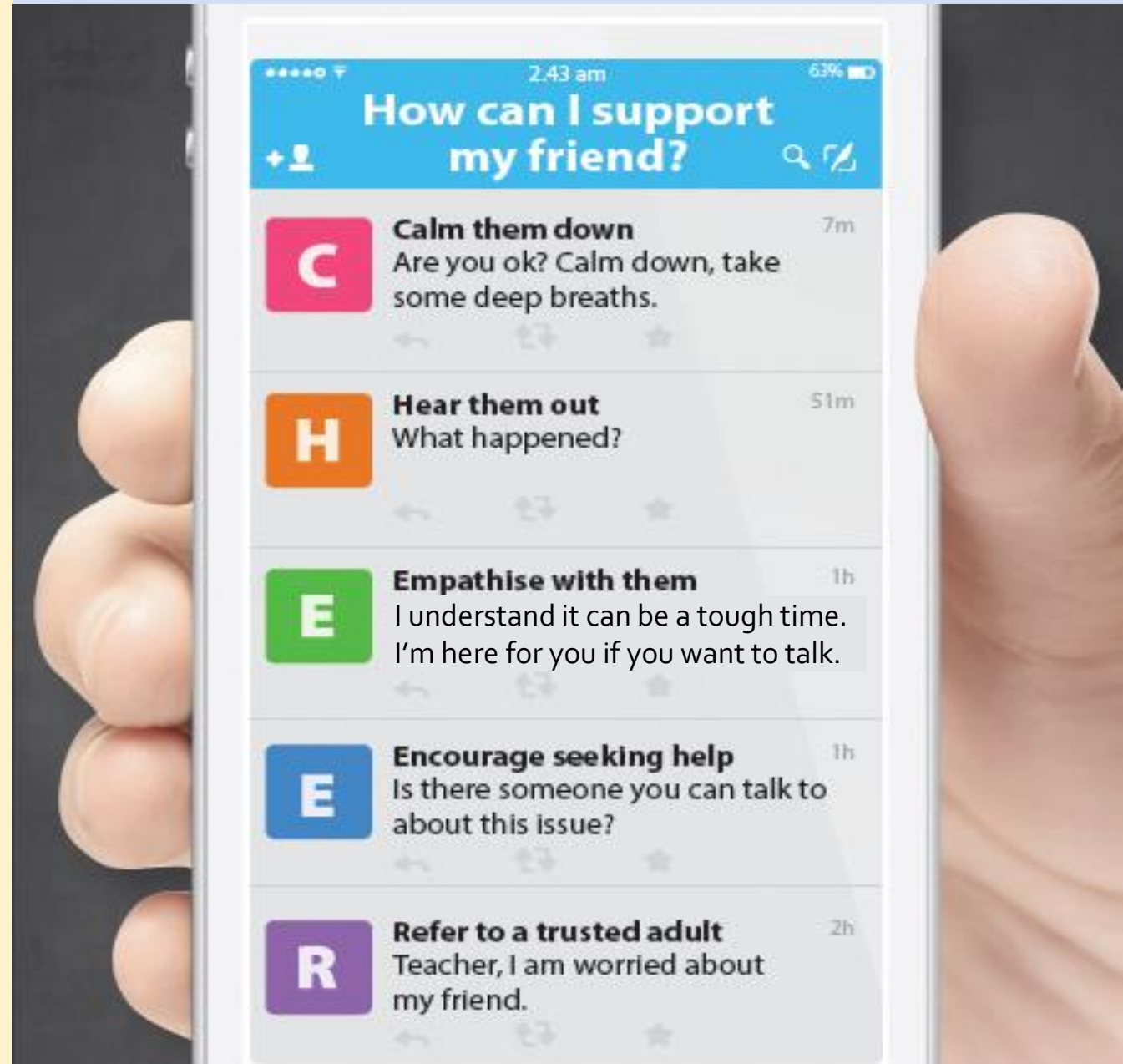


# Supporting Your Friend

- We may each experience different emotions upon receiving the results.
- You can share your friends' joy by congratulating them.
- If your friends appear to be disappointed with their results, encourage them.
- Alert a teacher if you are worried for them.



Keep a lookout for your friends in distress. You can support them in the following ways:





# Support is readily available for you.

There are other hotlines and chats available if you are more comfortable seeking help using these platforms. These can also be found in the infographic which you accessed earlier.



**SOS** provides round-the-clock emotional support for those in distress, thinking of suicide or affected by suicide.

Call: **1767**  
**(24-hour helpline)**

Whatsapp: **9151 1767**  
**(24-hour Care Text)**

**TOUCHline** is a helpline to provide youths with emotional support and practical advice.

Call: **1800-377 2252**

*Monday- Friday (Excluding Public Holidays):  
9am – 6pm*

## **Community Health Assessment Team**

**(CHAT)** provides personalised and confidential mental health checks and consultation for youths. To speak with a youth support worker, you can:

Visit: **CHAT Hub at \*Scape, 2 Orchard Link, #04-01A**

Call: **6493 6500/ 6501**

Email: **CHAT@mentalhealth.sg**

**Carey** is an online platform by Care Corner that provides free mental health check-ins with mental health professionals. Find out more at:  
<https://carey.carecorner.org.sg/>

**mindline.sg** is an online platform that provides tools, tips and resources to help you manage your health and well-being. Find out more at:  
[www.mindline.sg](http://www.mindline.sg)



**eC2** is an e-Counselling Centre where you can talk to a trained counsellor about the issues you are facing, right where you are.

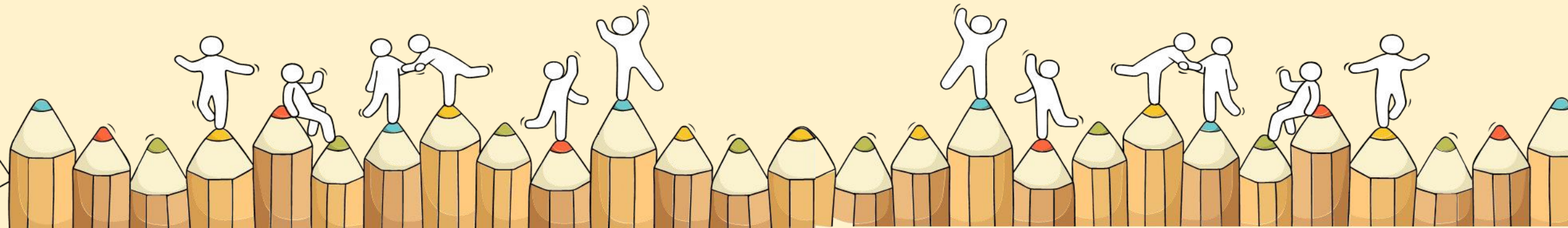
Chat with a counsellor at:

[www.ec2.sg](http://www.ec2.sg)

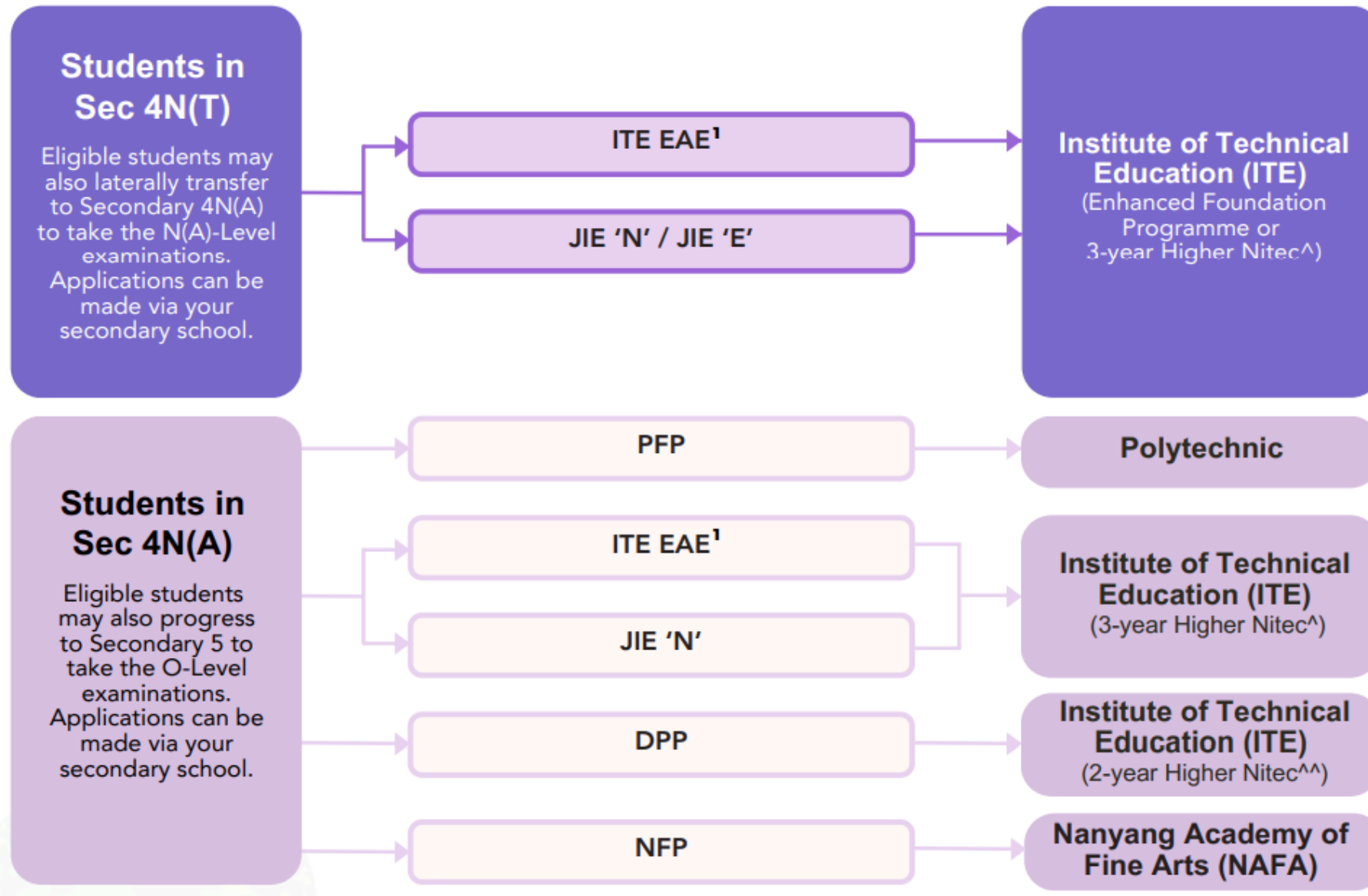
*Monday – Friday (Excluding Public Holidays):  
10am – 12pm & 2pm – 5pm*

# Admissions Exercises

Things to note



## Admissions exercises to take part in

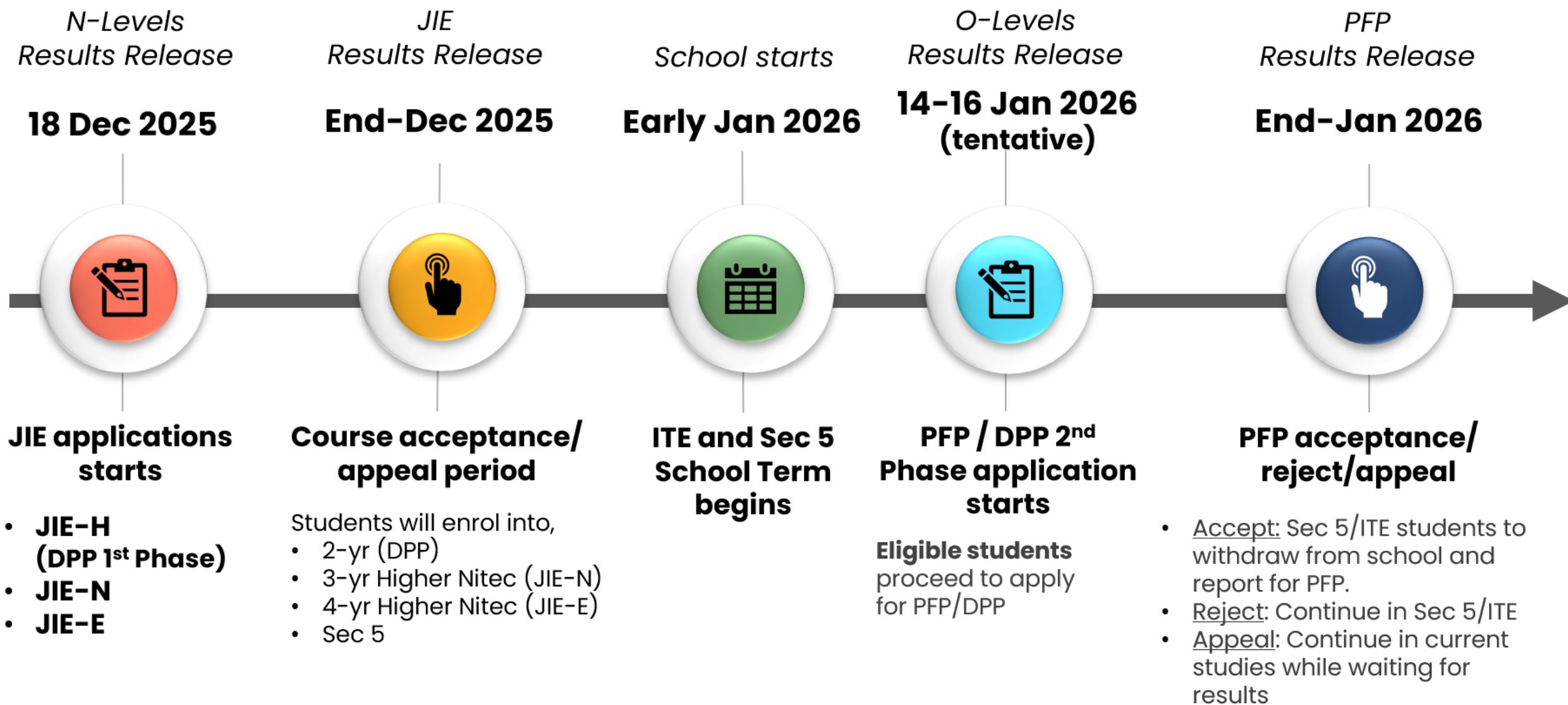


Retrieved from [A Guide to Post-Secondary Admissions Exercises](#).

<sup>^</sup>For list of courses, please visit the [ITE website](#)

<sup>^^</sup>Refers to 2-yr Higher Nitec courses under DPP. Visit the [ITE \(DPP\) website](#)

# Application Timeline



# Details of Admissions Exercises

<b>PFP</b>	Polytechnic Foundation Programme <b>ELMAB3 ≤ 12</b>	<b>N(A) Students ONLY</b>  Aggregate Computation: <b>ELMAB3</b> [EL + MA + Best 3 other subjects]
<b>NFP</b>	NAFA Foundation Programme <b>ELMAB3 ≤ 15</b>	
<b>Sec 5</b>	Progression to O-Levels via Sec 5 <b>ELMAB3 ≤ 19*</b> (check with school on its practice)	
<b>JIE-H DPP</b>	Direct-Entry-Scheme to Polytechnic Programme (DPP) 2-yr Higher Nitec → Mapped to Poly diploma course with minimum required GPA <b>ELMAB3 ≤ 19</b>	
<b>JIE</b>	JIE-N: ITE 3-yr Higher Nitec Completed N-Level exams – based on Minimum Entry Requirements (MER) for course.	<b>N(A) &amp; N(T) Students</b>
	JIE-E: ITE 4-yr Higher Nitec with Enhanced Foundation Programme Completed N-Level exams with 0 or 1 passes.	<b>N(T) Students Only</b>

# Information For Students on Key Dates for JIE 'N' and JIE 'E' January 2026 intake

1. All N(A)\*/N(T) school leavers are encouraged to submit an application during the **Main Application Phase** between **18 Dec 2025 (2.30pm) to 22 Dec 2025 (5pm)**. Application results for the Main Application Phase will be released on **26 Dec 2025 from 9am**.
2. If you wish to appeal, please accept the course offered **before** applying in the **Appeal & Late Application Phase** between **26 Dec 2025 to 2 Jan 2026**. The application results for the Appeal & Late Phase will be known on **6 Jan 2026 from 9am**.
3. Unsuccessful applicants can appeal under the **Final Application Phase** between **9 Jan to 16 Jan 2026 (1st Sub-Phase)** and **22 Jan to 6 Feb 2026 (2nd Sub-Phase)** for courses with vacancies. The application results for the Final Application Phase will be known by **Thu 22 Jan 2026 for the 1st-Sub-Phase** and by **Wed 11 Feb 2026 for the 2nd Sub-Phase**.

\*N(A) students progressing to ITE

For further enquiries, N-Level school leavers can contact  
ITE Hotline: 1800-2222-111



# **Application for Joint Intake Exercise 'N' (JIE 'N'):**

## **Full-time 3-year Higher Nitec courses (Jan 2026 intake)**

<https://www.ite.edu.sg/secondary-school-students/admissions/entry-qualifications/gce-n-level/for-gce-n-and-gce-o-students-jie-n/>

# **Application for Joint Intake Exercise 'E' (JIE 'E'):** **Full-time 4-year Higher Nitec courses (Jan 2026 intake)**

<https://www.ite.edu.sg/secondary-school-students/admissions/entry-qualifications/gce-n-level/for-gce-n-students-jie-e/>

# Information For Students on Key Dates for JIE 'H' (DPP) January 2026 intake

1. All N(A)\* school leavers are encouraged to submit an application during the **Main Application Phase** between **18 Dec 2025 (2.30pm) to 22 Dec 2025 (5pm)**. Application results for the Main Application Phase will be released on **26 Dec 2025 from 9am**.
2. If you wish to appeal, please accept the course offered **before** applying in the **Appeal Application Phase** between **26 Dec 2025 to 2 Jan 2026**. The application results for the Appeal Application Phase will be known on **6 Jan 2026 from 9am**.
3. Unsuccessful applicants can appeal under the **Final Application Phase** between **14 Jan (tentative) to 19 Jan 2026** for courses with vacancies. The application results for the Final Application Phase will be known between **21 Jan 2026 from 9am**.
4. Unsuccessful applicants can appeal under the **Final Appeal Phase** between **21 Jan to 2 Feb 2026** for courses with vacancies. The application results for the Final Appeal Phase will be known between **10 Feb 2026 from 5pm**.

\*N(A) students progressing to ITE

**Application for Joint Intake Exercise 'H' (JIE 'H'):**  
**DPP (Direct Entry Scheme to Polytechnic Programme)**  
**Full-time 2-year Higher Nitec courses (Jan 2026 intake)**

<https://www.ite.edu.sg/secondary-school-students/admissions/entry-qualifications/gce-n-level/for-gce-n-students-jie-h/>

# Key Pointers for Students on ITE's Joint Intake Exercise (JIE)

ALL students in N(T) and N(A) students (who are not progressing to 5N(A) or repeating 4N(A)) are eligible for JIE.  
Those who were unsuccessful in EAE are also eligible for JIE.

Apply in the 1st JIE main phase in December.

Use all 12 JIE choices wisely, as competition for 3-year Higher Nitec courses is keen!

Do consult your teachers / ECG counsellors to help you make your choices!

Do use the Last Aggregate Score (LAS) published in ITE's admission portal to help you make your course choices.

You are eligible for Enhanced Foundation Programme (EFP) if you receive an invitation letter to the EFP addressed to you and a copy of invitation letter for your parent/guardian.

If you are eligible for EFP, make sure you apply for both the 4-Year and 3-Year Higher Nitec Course.

The EFP helps to build the necessary literacy and numeracy foundations!

If you are counter-offered a course, accept it first to secure a place in ITE, before appealing for another course you may be more interested in!

# Online Application for

3-Year Higher Nitec Courses

4-year Higher Nitec Course with EFP

(for N(T) students with 0, 1 “N” pass)

1. Go to <https://www.ite.edu.sg>.

2. Click



icon.

3. Under JIE ‘N’, click **Apply Now** icon to link to the application website

Under JIE ‘E’, click **Apply Now** icon to link to the application website

4. At the application website:

- a) Use your Singpass to access the application portal.
- b) Upon completion of application, applicants will receive their web ID and password.



# Checking of Posting Results/Accept Course Offer

2-Year Nitec and 3-Year Higher  
Nitec Courses

3-Year Nitec/4-year Higher Nitec  
Course with EFP  
(for N(T) students with 0, 1 “N” pass)

1. Go to <https://istudent.ite.edu.sg>.
2. Enter **web ID** and password.
3. Click '**Self-Service**' followed by '**Student Admission**' followed by '**View Application Results**' to view the application results and to accept course offer.

The above steps applies to all phases (refer to Slide 11 for dates).  
For more details, please refer to ITE website.

# ITE ECG Team

**Yes.** You can reach out to the ITE Colleges' friendly ECG teams by scanning their QR codes!



College Central



College East



College West



# Progression to Sec 5N(A) to take O-Levels

---

## Eligibility

- **GROSS ELMAB3  $\leq$  19**

Note:

- Some schools may set additional conditions for progression to Sec5.
- **Minimum of Band 5** for subjects used in computation of ELMAB3 (Refer to MOE website)

## Pathways after Sec 5

- JC/MI: A-Levels
- Poly: Diploma
- ITE: Higher Nitec
- Arts Institutions

## Considerations

- Potential academic gap between N-Level and O-Level

# Progression to Sec 5N(A)

Criteria for Sec 5NA:

1. Obtained an ELMAB3 aggregate score of 19 points or less (excluding bonus points); and
  2. At least an N(A)-level grade 5 for all subjects used in the computation of ELMAB3.
- Pick up the Application form for Sec 5NA from the General Office.
  - Fill in the form and submit to the General Office by **12 pm, 26 Dec 2025**.

# NAFA Foundation Programme



The NAFA Foundation Programme (NFP) is a 1-year preparatory course designed for **N(A) students** to transition seamlessly into NAFA's 3-year diploma programmes. It builds essential artistic and academic foundations to support their creative growth.

# Important Documents you will receive

- N Level Certificate
- Result Slip
- **Form N** (tear along the perforated line on the form and the Eligible Courses will be shown inside)
- ITE Admission & Course Info Brochure
- ECG Material (What's NEXT brochure)
- Leaving Certificate



**~Thank you~**

